

K-25/28 INDUSTRIAL COMPRESSOR RANGE

FOR AIR AND NITROGEN



350 - 72000 psig

57 - 240 scfm



K 28 compressor block

Companies that rely on absolute operating safety and investment security in their inspection or production processes have confidence in 60 years of BAUER-experience in High-Pressure Systems Technology.

Whatever application you want to realize with medium or high pressure air or nitrogen, we support you in every respect.

Our service includes project planning, installation of complete turn-key systems, certifications of all kinds and, of course, a reliable after sales service as well as a guaranteed spare parts supply for decades - worldwide.

Extensive

standard scope of supply



Air-cooled compressor block with force-feed lubrication, interstage and after coolers, interstage separators after each stage, final **oil and water separator**.

Final pressure safety valve, pressure maintaining and check valve.

Cycle counter to register the load cycles in the oil and water separator.

Automatic condensate drain device with unloaded start and condensate collecting system 40 l.

V-belt driven 3phase motor (400/690V, 50 Hz; other voltages upon request).

All components mounted on a **common base frame** with **shock absorbers** for free-standing installation.

Fully automatic and programmable compressor control **B-CONTROL extended**.

Gas intake line is required if **nitrogen** is supposed to be compressed.**

** consisting of: particle filter, non-return/solenoid valve, sensors for intake pressure monitoring min./max.

Ease of maintenance, best access and user friendliness are all integral to the **machine design**.

BAUER compressor units are **delivered** to the customer completely **tested** and **ready for operation**.

Optional:

The **Super Silent Version** includes a **noise abating closed cabinet**.

The **B-MESSENGER** transfers **information** from the B-CONTROL to the customer.

Total Control

with B-CONTROL

Many industrial processes require remote monitoring and fully automatic operation.

The **BAUER B-CONTROL** with **clear display** controls the compressor, the motor as well as the automatic condensate drain.

Pressure and temperature **monitoring** of each stage ensure **maximum operating safety**.

Compressor operation can be regulated via integrated final

pressure sensors in the storage cylinders.

The **big 8-line LCD-display** with free choice of languages * **informs** the operator at **any time** about all important parameters such as oil pressure, final temperature and maintenance work due.

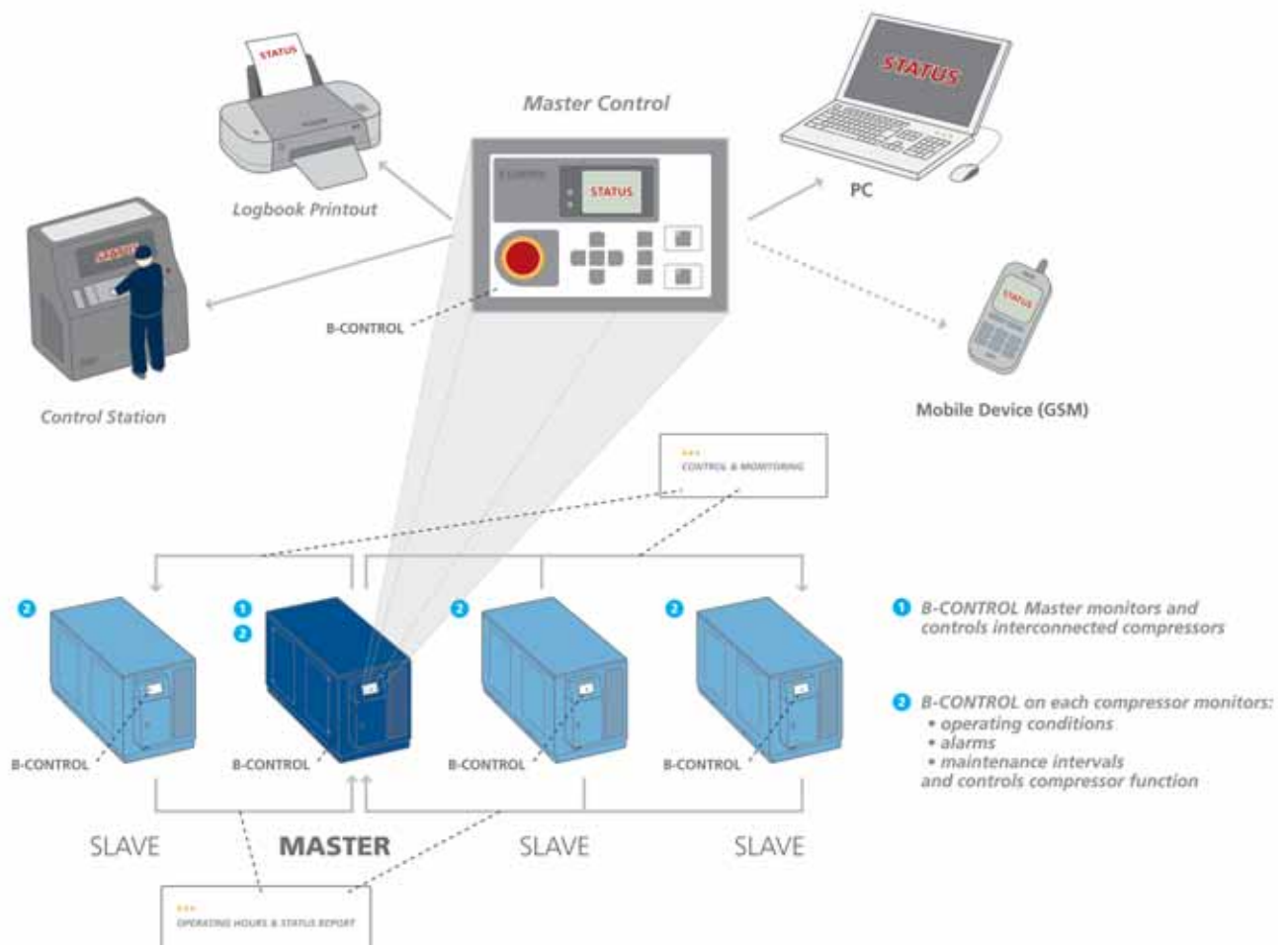
*actually 7 languages available

An optional **CAN-Bus-interface** allows **interconnected operation** of several units, **remote online-monitoring** and **inte-**

gration in higher-ranking **control systems**.

The **B-MESSENGER** (optional) **informs** the operator via **SMS on the mobile phone** or **pager** or **e-mail** about **all relevant compressor data**, e.g. forthcoming maintenance work or filter changes.

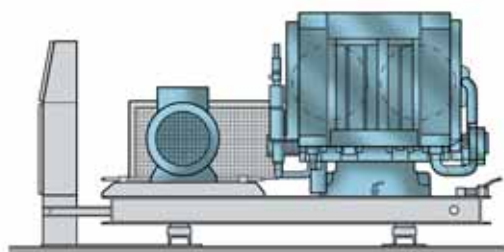
The **BAUER B-Control (PLC control)** allows **free programming** acc. to customer's requirements.



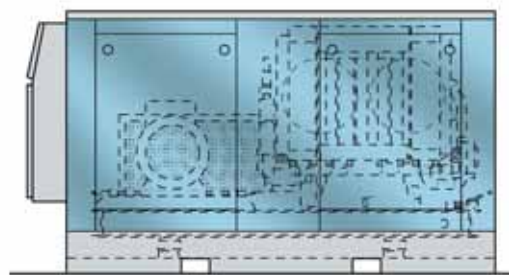
Parameters monitored by B-CONTROL:

- **Pressure:** interstage pressures of all stages / final pressure / oil pressure.
- **Temperature:** temperature of all stages / cooling air temperature
- **Drive:** motor overcurrent
- **Service:** maintenance intervals
- **Condensate drain:** control of condensate drain valves with cycle counter for final separator

TECHNICAL DATA



Open:
dimensions in mm: length width height
 3020 1300 1525



SUPER SILENT: length width height
dimensions in mm: 3020 1300 1525

Model (air version)	Model (nitrogen version)	F.A.D. 1) scfm	Speed rpm	Drive kW	Net weight open version approx. kg	Net weight Super Silent version approx. kg
3 stage, 350 -500 psig, 74 -240 scfm						
A 25.4 - 30	AGI 25.4 - 30	74	940	30	1360	1860
A 25.4 - 37	AGI 25.4 - 37	99	1200	37	1430	1930
A 28.2 - 45	AGI 28.2 - 45	120	1050	45	1400	1900
A 25.5 - 55	AGI 25.5 - 55	148	940	55	1900	2400
A 25.5 - 75	AGI 25.5 - 75	194	1200	75	2060	2560
A 28.3 - 90	AGI 28.3 - 90	240	1050	90	2160	2660
3-stage, 440 -900 psig, 85 -240 scfm						
B 25.4 - 37	BGI 25.4 - 37	85	1070	37	1430	1930
B 25.4 - 45	BGI 25.4 - 45	101	1270	45	1460	1960
B 28.2 - 55	BGI 28.2 - 55	120	1050	55	1500	2000
B 25.5 - 75	BGI 25.5 - 75	166	1050	75	2060	2560
B 28.3 - 90	BGI 28.3 - 90	208	940	90	2160	2660
B 28.3 - 100	BGI 28.3 - 100	240	1050	110	2330	2850
3-stage, 910 - 1100 psig, 71 - 117 scfm						
E 25.4 - 37	EGI 25.4 - 37	71	940	37	1430	1930
E 25.4 - 45	EGI 25.4 - 45	92	1200	45	1460	1960
E 28.2 - 55	EGI 28.2 - 55	117	1050	55	1500	2000
4-stage, 1100 - 1300 psig, 57 - 117 scfm						
E 25.0 - 30	EGI 25.0 - 30	57	1000	30	1650	2150
E 25.0 - 37	EGI 25.0 - 37	71	1250	37	1720	2220
E 28.0 - 45	EGI 28.0 - 45	88	800	45	1780	2280
E 28.0 - 55	EGI 28.0 - 55	117	1050	55	1860	2360
4-stage, 1300 - 5000 psig, 67 - 124 scfm						
I 25.0 - 45	GI 25.0 - 45	67	1180	45	1750	2250
I 28.0 - 55	GI 28.0 - 55	88	830	55	1860	2350
I 28.0 - 75	GI 28.0 - 75	124	1180	75	1950	2450
5-stage, 5000 - 7200 psig, 67 - 81 scfm						
I 25.9 - 45	GI 25.9 - 45	67	1180	45	1900	2400
I 25.18 - 55	GI 25.18 - 55	81	1100	55	1950	2450

1) measured with flow meter at 0,8 factor of final pressure (±5%)



BAUER KOMPRESSOREN GmbH

P.O.BOX 710260 · D-81452 MÜNCHEN
 DRYGALSKI-ALLEE 37 · D-81477 MÜNCHEN
 PHONE 0049 89 78049-0
 FAX 0049 89 78049-167
 Internet: www.bauer-kompressoren.de
 e-mail: info@bauer-kompressoren.de